



INDOFINE Chemical Company, Inc.

121 Stryker Lane, Bldg. 30, Suite 1 • Hillsborough, NJ 08844 • U.S.A.

Phone: (908) 359-6778 • FAX: (908) 359-1179

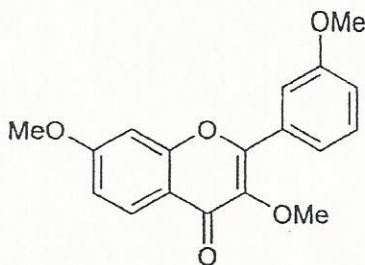
website: www.indofinechemical.com

e-mail: chemical@indofinechemical.com

CERTIFICATE OF ANALYSIS

Cat. No.: 22-328

<u>Product:</u>	3,7,3'-TRIMETHOXYFLAVONE
<u>Lot No.:</u>	0012287
<u>Molecular Formula:</u>	C ₁₈ H ₁₆ O ₅
<u>M.W.:</u>	312.33
<u>Melting Point:</u>	118-120°C
<u>Appearance:</u>	White fluffy powder
<u>Solubility:</u>	Soluble in chloroform
<u>TLC:</u>	Hexane:Ethyl acetate (7:3)
<u>Storage:</u>	Cool, dry place
<u>Purity(HPLC):</u>	99.75%





INDOFINE Chemical Company, Inc.

121 Stryker Lane, Bldg. 30, Suite 1 • Hillsborough, NJ 08844 • U.S.A.

Phone: (908) 359-6778 • FAX: (908) 359-1179

website: www.indofinechemical.com

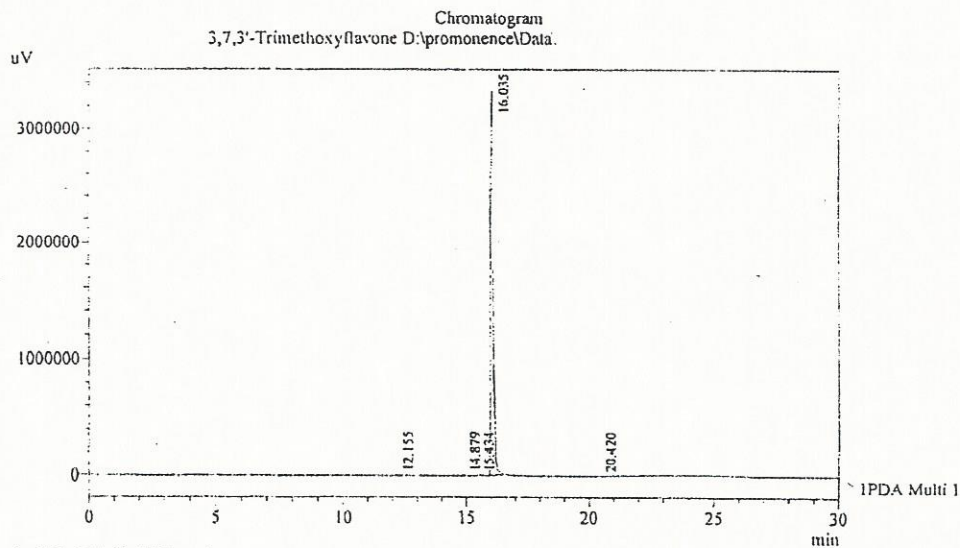
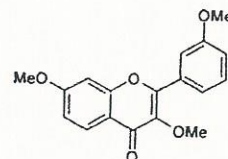
e-mail: chemical@indofinechemical.com

HPLC ANALYSIS

Acquired by : Sanjeev
 Sample Name : 3,7,3'-Trimethoxyflavone
 Sample ID : Lot No:-0012287
 Injection Volume : 20 uL
 Data Filename : 110212H.lcd
 Method Filename : Linear Gradient.M.lcm

Catalog No.: 22-328
 Product name: 3,7,3'-Trimethoxyflavone
 Lot No.: 0012287

Column : LUNA C-18(2), (250mm x4.6mm 5.0μ)
 Flow : 1.000 mL/min.
 Mobile Phase : A(0.05% TFA in water) B(Acetonitrile)
 0.01 90 10
 12.0 10 90
 20.0 10 90
 25.0 90 10
 30.0 90 10



1 PDA Multi 1 / 254nm 4nm

PeakTable

Peak#	Name	Ret. Time	Area	Area %	Relative Retention Time
1	RT:12.155	12.155	34799	0.14	0.76
2	RT:14.879	14.879	10540	0.04	0.93
3	RT:15.434	15.434	2408	0.01	0.96
4	RT:16.035	16.035	24824774	99.75	1.00
5	RT:20.420	20.420	13590	0.05	1.27
Total			24886110	100.00	



INDOFINE Chemical Company, Inc.

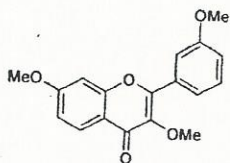
121 Stryker Lane, Bldg. 30, Suite 1 • Hillsborough, NJ 08844 • U.S.A.

Phone: (908) 359-6778 • FAX: (908) 359-1179

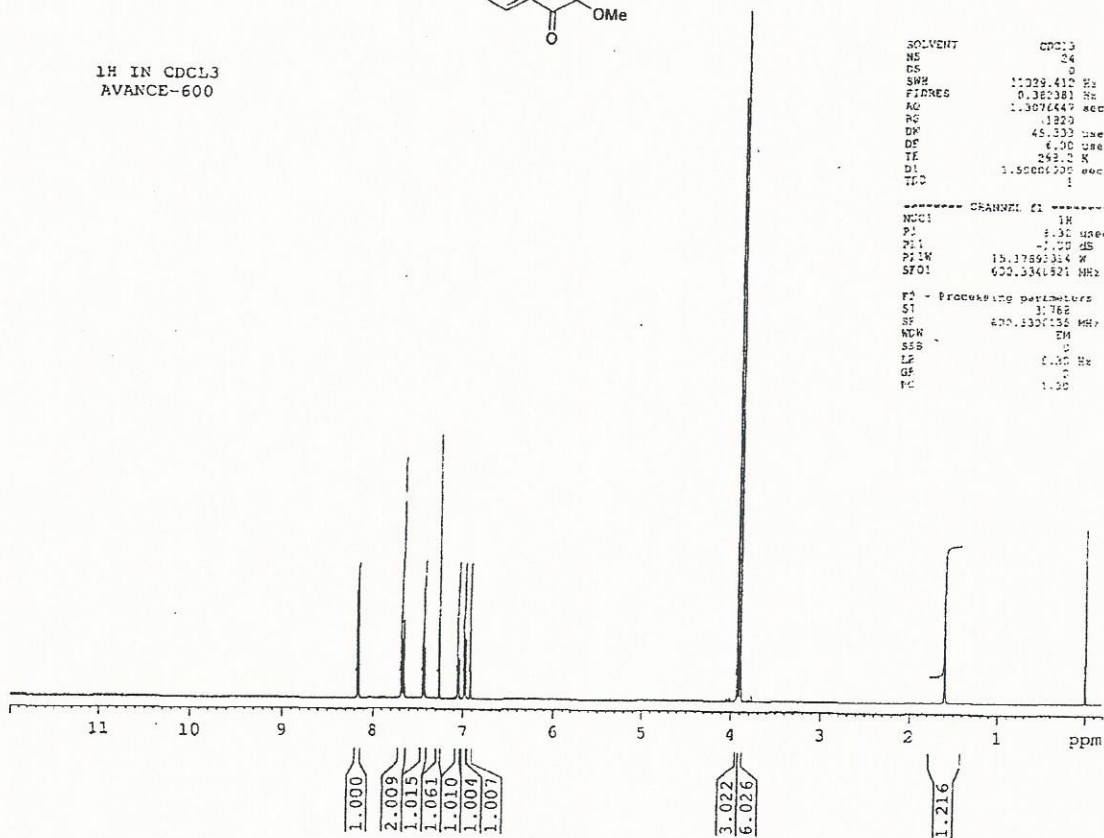
website: www.indofinechemical.com

e-mail: chemical@indofinechemical.com

Catalog No.: 22-328
Product name: 3,7,3'-Trimethoxyflavone
Lot No.: 0012287



¹H IN CDCL₃
AVANCE-600



SOLVENT CDCl₃
NS 24
DS 0
SWH 11229.412 Hz
FIDRES 0.362381 Hz
AQ 1.3076447 sec
RG 1220
DN 45.332 usec
DE 6.00 usec
TE 293.2 K
D1 1.50001200 sec
T20 1

----- CHANNEL f1 -----
NUC1 1H
P1 1.30 usec
PL1 -1.00 dB
PL1W 15.17591314 W
SFO1 600.1361521 MHz

F2 - Processing parameters
SI 1.762
SF 600.1361521 MHz
WDW EM
SSB 0
LF 0.00 Hz
GB 0
PC 1.00



INDOFINE Chemical Company, Inc.

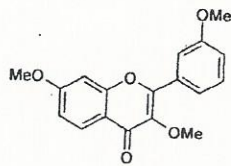
121 Stryker Lane, Bldg. 30, Suite 1 • Hillsborough, NJ 08844 • U.S.A.

Phone: (908) 359-6778 • FAX: (908) 359-1179

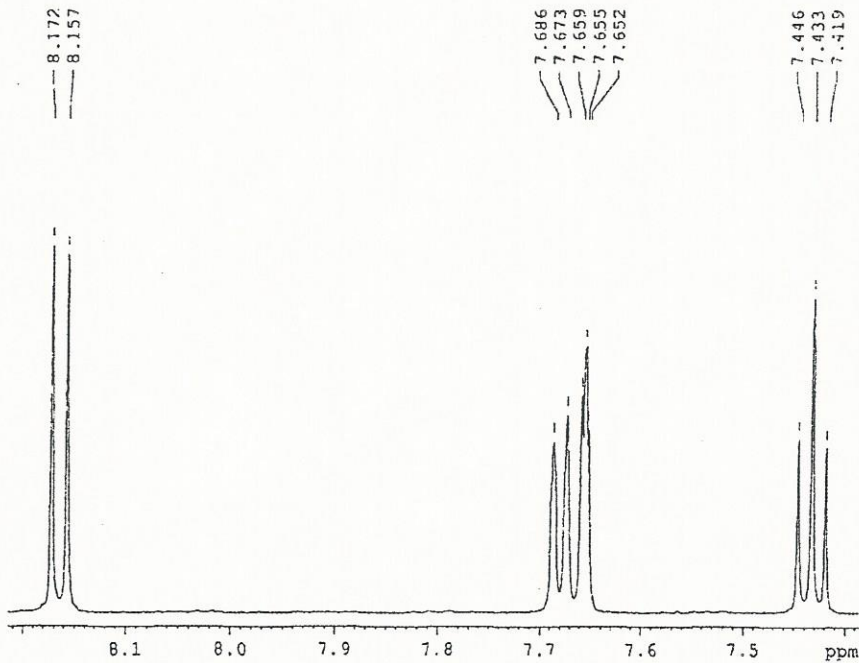
website: www.indofinechemical.com

e-mail: chemical@indofinechemical.com

Catalog No.: 22-328
Product name: 3,7,3'-Trimethoxyflavone
Lot No.: 0012287



¹H IN CDCl₃
AVANCE-600



SOLVENT CDCl₃
NS 24
DS 3
SWH 11029.412 Hz
FIDRES 0.383361 Hz
AQ 1.3073447 sec
RG 800
EK 45.313 chn1
DE 1.000 umol
TE 295.0 K
D0 1.2900000 sec
T0 1

===== CHANNEL 1 =====
NUC1 1H
P1 9.20 umol
P11 4.00 dB
PL1W 15.1786314 W
SFO1 600.1342821 MHz
PC - Processing parameters
SI 32768
SF 600.1342821 MHz
WDW EM
SSB 0
LA 1.30 Hz
GB 0
PC 0.00



INDOFINE Chemical Company, Inc.

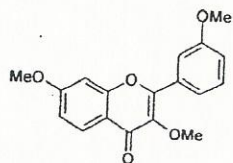
121 Stryker Lane, Bldg. 30, Suite 1 • Hillsborough, NJ 08844 • U.S.A.

Phone: (908) 359-6778 • FAX: (908) 359-1179

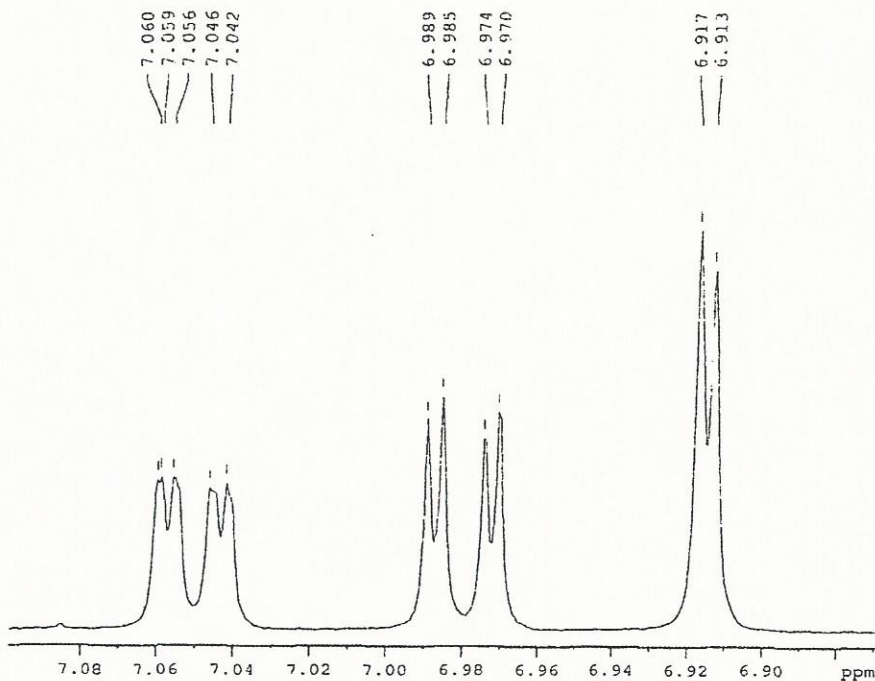
website: www.indofinechemical.com

e-mail: chemical@indofinechemical.com

Catalog No.: 22-328
Product name: 3,7,3'-Trimethoxyflavone
Lot No.: 0012287



¹H IN CDCl₃
AVANCE-600



SOLVENT CDCl₃
NS 04
DS 0
SWH 11029.410 Hz
FIDRES 0.380361 Hz
AQ 1.3372447 sec
RG 1827
DM 25.338 sec
DE 0.200 sec
TE 298.2 K
D 1.5000 sec
END

----- CHANNEL f1 -----
NUC1 13C
P 2.00 sec
PR1 -1.00 dB
PCAN 15.1785314 W
SFO1 600.3247821 MHz

----- Processing parameters -----
SI 32768
SF 600.3101325 MHz
WDW EM
SSB 0
LB 0.30 Hz
GB 0
PC 1.00



INDOFINE Chemical Company, Inc.

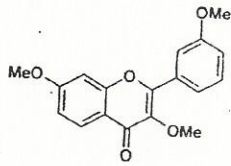
121 Stryker Lane, Bldg. 30, Suite 1 • Hillsborough, NJ 08844 • U.S.A.

Phone: (908) 359-6778 • FAX: (908) 359-1179

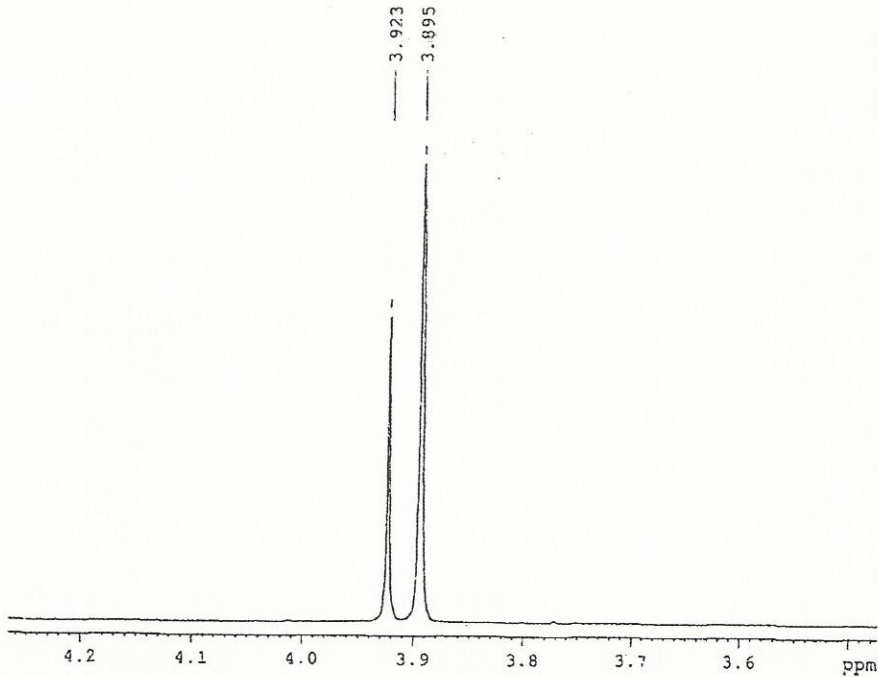
website: www.indofinechemical.com

e-mail: chemical@indofinechemical.com

Catalog No.: 22-328
Product name: 3,7,3'-Trimethoxyflavone
Lot No.: 0012287



¹H IN CDCl₃
AVANCE-600



```
SOLVENT CDCl3
DE 74
DS 0
SWH 11029.411 Hz
FIDRES 0.263381 Hz
AQ 1.5076447 sec
RG 320
OR 45.333 umax
DE 6.120 umax
TE 295.2 K
EC 1.5000000 sec
TD 1
```

```
===== CHANNEL f1 =====
NUC1 1H
P 6.30 umax
PL 0.00 dB
PLIK 13.17391914 W
SFO1 600.1342821 MHz

F1 - Processing parameters
SI 32768
SF 600.1300135 MHz
WDW EM
SSB 0
LB 1.30 Hz
GB 0
PC 1.00
```